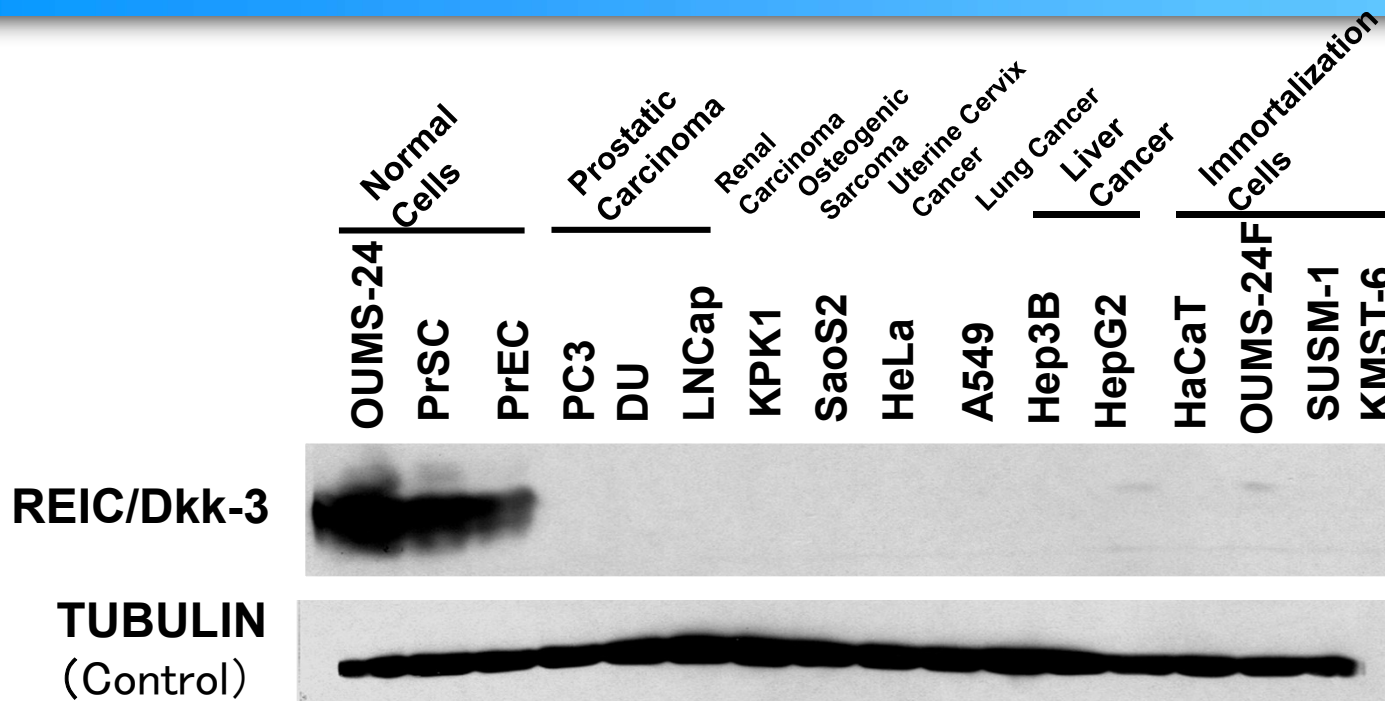




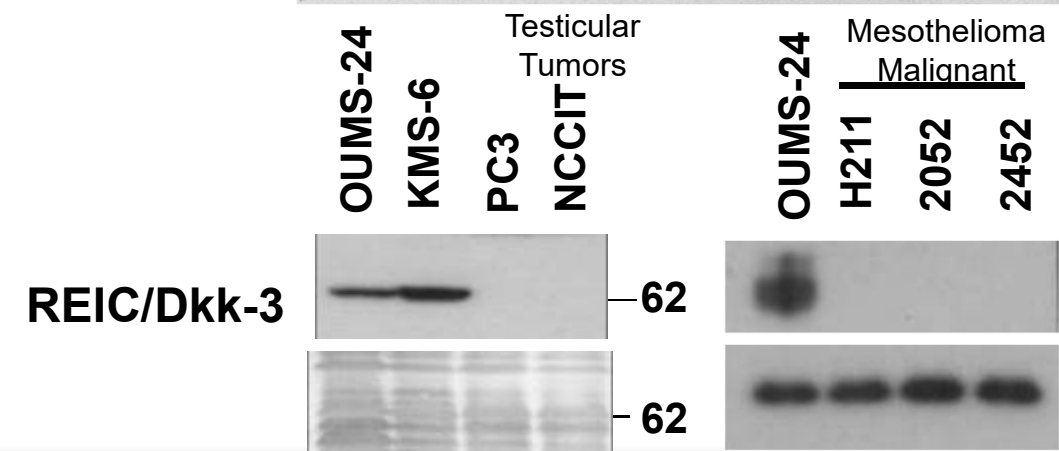
Cancer suppressor gene REIC found at Okayama University



Frequency of Gene Abnormality in Various Cancers (%)

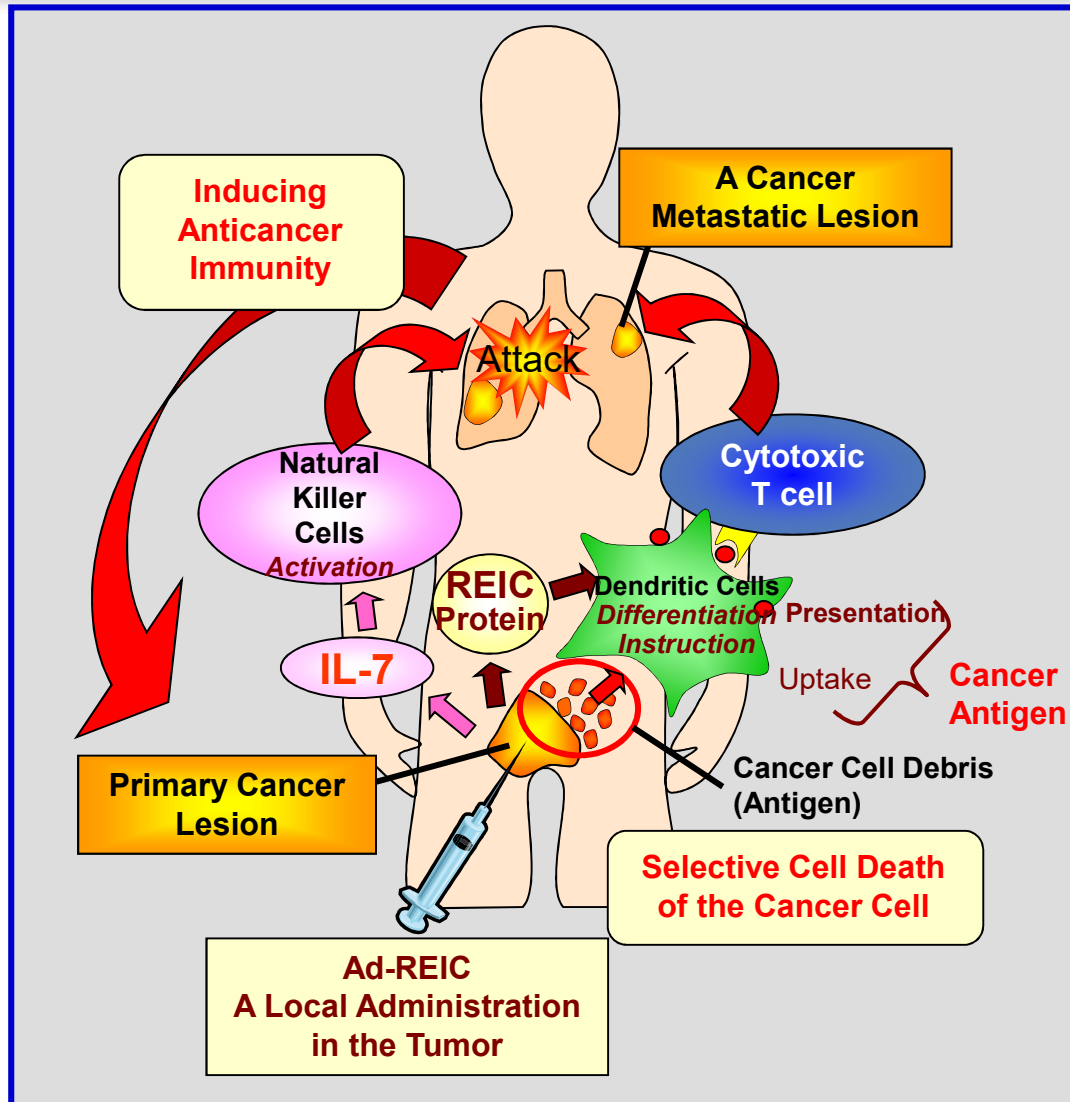
P53 vs. REIC

Lungs	56 ≧ 63
Kidney	19 << 88
Prostate	30 << 100
Mesothelioma	0 << 90



REIC is a tumor suppressor gene whose gene (protein) expression is restrained in an extremely various types of cancer.
⇒ Various types of cancer can be targeted for treatment.

Mechanism of cancer treatment by Ad-REIC(1)



● Selective Cell Death of Cancer

⇒ Large quantities of apoptosis of cancer cell will be the best presentation method of cancer antigen to the self-immune system.

● Instruction of Cytotoxic T cells (CTL)

⇒ REIC protein's inducibility of dendritic cells differentiation builds optimal environment for the instruction of CTL which attacks cancer cells.

● Activation of NK Cells

⇒ Natural killer cells attack and kill cancer cells, to which CTL cannot.

REIC's possibility is extremely high, to realize a innovative medical care as a **gene medicine(*)** for various types of solid tumor, e.g. **mesothelioma malignant, hormone resistance prostate cancer**, to which therapy has not established.

* This treatment has nothing to do with genetic recombination or inheritable gene modification

Mechanism of cancer treatment by Ad-REIC (2)

Cancer Selective Apoptosis and Inducing Anti-tumor Immunity

